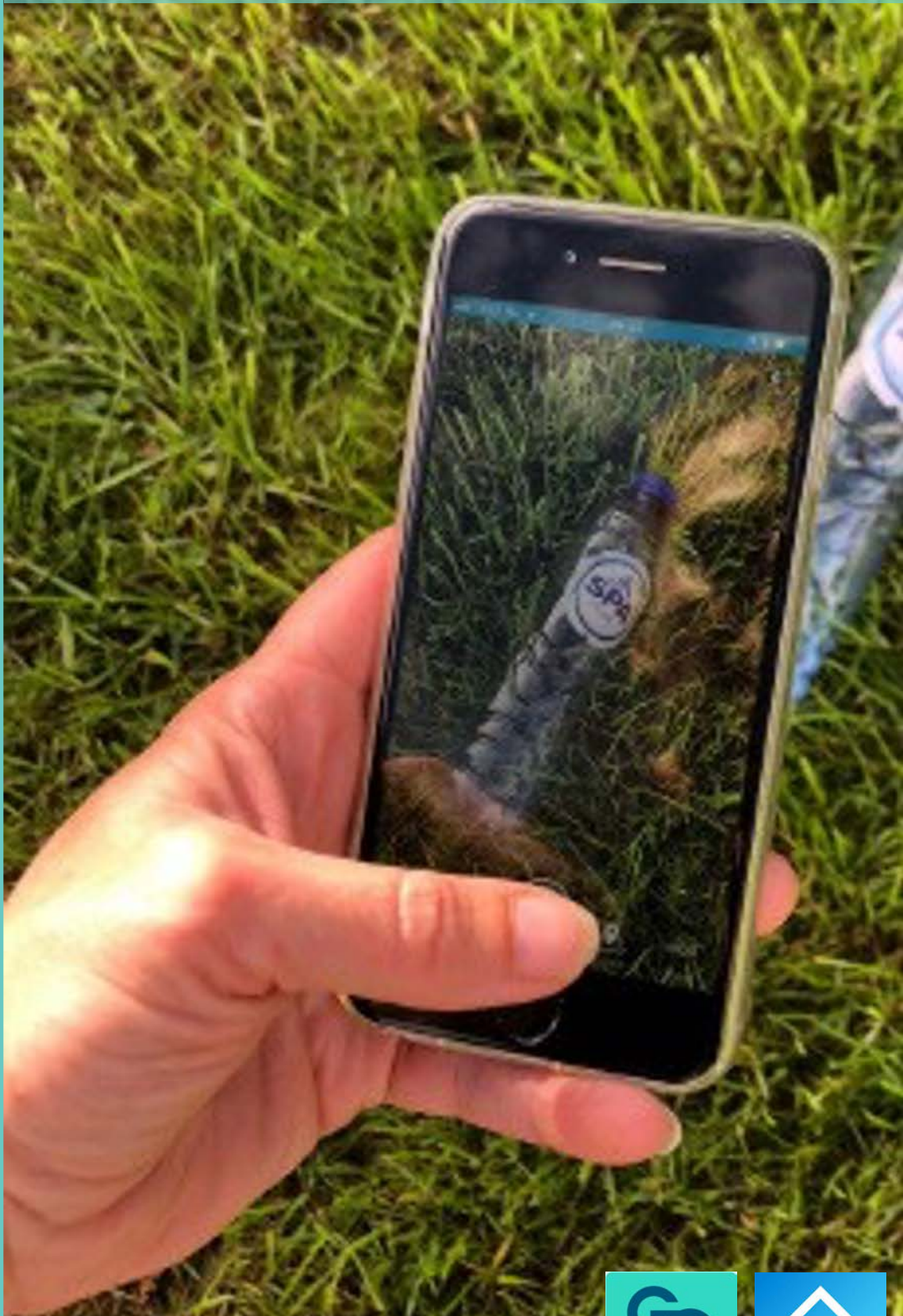



Tag metod Worldwide **LITTERATI_APP**



CLEANING LITTER WASTE ACCORDING TO THE GOCLEAN METHODE

- 
- * Get on your way in a good mood. You do something good for nature.
 - 1 Pack your Wimmer package: Wimmer ring, stroller, litter picker, gloves and your special litter bag.
 - 2 Grab your phone and turn on the Litterati app.
 - 3 Choose an area to pick. Think of your own street, the circle that you walk with your dog or a piece of a recreational area.
 - 4 If you find litter on your walk, pick it up and take a picture of it with your phone in the Litterati app. (You can choose to tag litter immediately, but this is also possible at home during coffee)
 - 5 Dispose the piece of litter in the PMD or residual waste bag. The above step is done with every piece of litter found
 - 6 Arriving home. Dispose Plastic and Metal in the recycling bag, Glass in the glass container, etc. You then have a small amount of residual waste. Check if your City or Municipality offer free disposal or pick-up.
 - 7 Take something nice to drink and tag litter that is not yet tagged.
 - 8 Be satisfied with yourself. You've contributed to a cleaner and healthier environment.
 - 9 Source approach your data is valuable! It's used to analyze Litter and development of measures and policy to prevent litter.

Individually you create change, together we make an impact



Tag COMB method Worldwide



Tag COMB method*

Four layers of classification COMB method

Category - What is the collective name? For example: Packaging material, energy drink, , candy, cookie, soft drink, fastfood, alcohol etc. If unclear but food or drink related: use category “Food Unknown” or Drinks Unknown”

Object - what object did you find? For example: wrapper, can, bottle, fork, tray, cigarette box, cigarette butt, ball, container etc.

Material - what material is the object made of? For example: plastic, metal, wood, paper, aluminum etc. If it consists of multiple materials, choose the most harmful type.

Brand - Self-explanatory, preferably the manufacturer and not the label

On the following pages we will show you examples how certain items preferably can be tagged.

*Tag method development: Dirk Groot (Zwerfinator) en GoClean



C: Beer
O: Bottle
M: Glass
B: Hertog Jan



C: Energydrink
O: Can
M: Aluminum
B: Red Bull



C: Beer
O: Can
M: Metal
B: Heineken



C: Energy drink
O: Bottle
M: Plastic
B: AA



C: Wine
O: Drink Carton
M: Plastic
B: Alter Geniesser



C: Drinks unknown
O: Bottle
M: Plastic
B:



C: Wine
O: Bottle
M: Glass
B:



C: Coffee/Tea
O: Cup
M: Paper
B: To Go



C: Schnapps
O: Bottle
M: Glass
B: Feigling



C: Coffee/Tea
O: Cup
M: Plastic
B:



C: Rum mix
O: Can
M: Metal
B: Belnor



C: Tea
O: Teabag wrapper
M: Paper
B: Pickwick



C: Icedtea
O: Drink carton
M: Plastic
B: Lipton



C: Coffee/tea
O: Stirrer
M: Plastic
B:



C: Icedtea
O: Can
M: Metal
B: Albert Heijn



C: Sinas
O: Can
M: Metal
B: Sisi



C: Icedtea
O: Bottle
M: Plastic
B: Arizona



C: Cola
O: Bottle
M: Plastic
B: Jumbo



C: Orangejuice
O: Drink carton
M: Plastic
B: Taksi



C: Cola
O: Can
M: Metal
B: Coca Cola



C: Applejuice
O: Drink carton
M: Plastic
B: Goudappeltje



C: Cassis
O: Bottle
M: Plastic
B: gwoon



C: Fruitjuice
O: Drink carton
M: Plastic
B: Solevita



C: Cassis
O: Can
M: Metal
B: Albert Heijn



C: Water
O: Bottle
M: Plastic
B: Romy



C: Fruit juice
O: Bottle
M: Plastic
B: Mogu Mogu



C: Vitamine water
O: Bottle
M: Plastic
B: Sourcy



C: Smoothie
O: Bottle
M: Plastic
B: Solevita



C: Yoghurt drink
O: Drink carton
M: Plastic
B: Fristi



C: Drinks Unknown
O: Can
M: Metal
B:
Extra tag: Shredded



C: Drinks unknown
O: Bottle
M: Plastic
B:



C: Apple juice
O: Can
M: Metal
B:



C: Smoothie
O: Bottle
M: Plastic
B:



C: Yoghurt
O: Drink pouch
M: Aluminum + Plastic (2 tags)
B: Breaker



C: Milk
O: Drink carton
M: Plastic
B:



C: Juice
O: Drink pouch
M: Aluminum + plastic (2 tags)
B: Capri Sun



C: Drinks unknown
O: Bottlecap
M: Plastic
B: Mogu Mogu



C: Beer
O: Bottlecap
M: Metal
B: Heineken



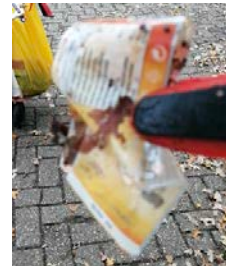
C: Drinks other
O: Cup
M: Plastic
B:



C: Drinks other
O: Straw wrapper
M: Plastic
B:



C: Fastfood
O: Lid
M: Plastic
B: McDonalds



C: Drinks unknown
O: Label
M: Plastic
B:



C: Drinks unknown
O: Can tab
M: Metal
B:



C: Water
O: Label
M: Paper
B: Spa



C: Drinks other
O: Straw
M: Plastic
B:



C: Energy drink
O: Package
M: Paper
B: Red Bull



C: Drinks other
O: Lid piece
M: Plastic
B:



C: Fastfood
O: Cup complete
M: Paper + Plastic (2 tags)
B: Mc Donalds



C: Candy
O: Box
M: Plastic
B: Tic Tac



C: Candy
O: Candywrapper
M: Plastic
B: Antaflu



C: Candy
O: Container
M: Metal
B: Smint



C: Candy
O: Candy wrapper
M: Paper + Aluminum (2 tags)
B: Nord Fresh



C: Candy
O: Container
M: Plastic
B: Haribo



C: Candy
O: Candy bag
M: Plastic
B: Haribo



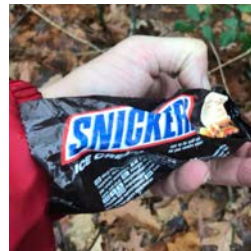
C: Lollipop
O: Lollipop wrapper
M: Plastic
B:



C: Candy
O: Candy bag
M: Plastic
B: Kruidvat



C: Lollipop
O: Lollipopstick
M: Plastic
B:



C: Candy
O: Candy wrapper
M: Plastic
B: Snickers



C: Candy
O: Wrapper
M: Paper
B: Maoam



C: Chips
O: Chips container
M: Paper + aluminum (2 tags)
B: Pringles



C: Chips
O: Chips bag
M: Aluminum + plastic
(2 tags)
B: Bugles



C: Chewing gum
O: Package
M: Cardboard
B: Sportlife



C: Cookie
O: Cookie wrapper
M: Aluminum
B: Prince



C: Chewing gum
O: Container
M: Plastic
B: Mentos



C: Cookie
O: Cookie wrapper
M: Plastic
B: Kanjers



C: Chewing gum
O: Strip
M: Plastic + Aluminum (2 tags)
B: Sportlife



C: Icecream
O: Icecream wrapper
M: Plastic
B: Ola



C: Chewing gum
O: gum piece
M: Organic
B:



C: Icecream
O: Icecream Wrapper
M: Paper
B: Calippo



C: Unknown Category
O: small piece
M: Plastic
B:



C: Icecream
O: Icecream stick
M: Wood
B:



C: Food other
O: Bag
M: Plastic
B: Saladinettes



C: Cheeseburger
O: Wrapper
M: Paper
B: Mc Donalds



C: Food unknown
O: Can
M: Metal
B: Rio



C: Bread
O: breadbag
M: Paper + plastic (2 tags)
B:



C: Mcflurry
O: Cup
M: Paper
B: Mc Donalds



C: Food other
O: Wrapper
M: Plastic
B: Bifi



C: Fastfood
O: Box
M: Paper
B:



C: Fastfood
O: Fries tray
M: Plastic
B:



C: Fastfood
O: Bag
M: Paper
B: Mondriaan



C: Food Unknown
O: Wrapper
M: Plastic
B:



C: Chocolate
O: wrapper
M: Plastic
B: Milka



C: Bread
O: Breadclip
M: Plastic
B:



C: Chocolate
O: wrapper
M: Aluminum
B: Kinder



C: Smoking
O: Cigarette box
M: Plastic + Paper (2 tags)
B: Marlboro



C: Narcotics
O: Wrapper
M: Paper
B: Scarface



C: Smoking
O: Vloei
M: Paper
B: Rizla



C: Smoking
O: Shag bag
M: Plastic
B: Javaanse Jongens



C: Narcotics
O: Lange vloei
M: Paper
B: Blue smoking



C: Narcotics
O: Package
M: Paper
B: Reefers



C: Narcotics
O: Lange vloei
M: Paper
B:



C: Smoking
O: Cigarette box cover
M: Paper
B:



C: Smoking
O: Butt
M: Celluloseacetate
B:



C: Smoking
O: Wrapper cigarette box
M: Plastic
B:



C: Smoking
O: Lighter
M: Plastic
B: Bic



C: Narcotics
O: Small ziplock bag
M: Plastic
B:



C: Personal hygiene
O: Cottonbud
M: Plastic
B:



C: Personal hygiene
O: Nail glue tube
M: Plastic
B:



C: Deodorant
O: Spray container
M: Metal
B: Axe



C: Personal hygiene
O: Tissue
M: Paper
B:



C: Personal hygiene
O: Wrapper toilet tablet
M: Aluminum
B: W5



C: Tickets & receipts
O: Shopping list
M: Paper
B:



C: Personal Hygiene
O: Wet wipe
M: Plastic
B:



C: Tickets & receipts
O: Cash receipt
M: Paper
B: Jumbo



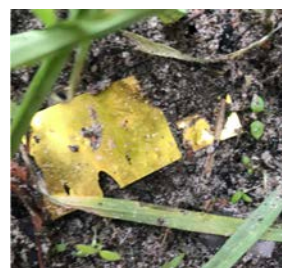
C: Personal hygiene
O: Tissue pack
M: Plastic
B: Kleenex



C: Fireworks
O: Firework
M: Paper + Plastic 2 tags
B:



C: Personal hygiene
O: Hair tie
M: Elastic
B:



C: Decorations
O: Confetti
M: Plastic
B:



C: Parking
O: Parkingticket
M: Paper
B: Gemeente Arnhem



C: Medical
O: Package compress
M: Paper
B: Heka Pres



C: Train
O: Trainticket
M: Paper
B: Arriva



C: Construction material
O: Tiewrap
M: Plastic
B:



C: Travel
O: Label piece
M: Plastic
B:



C: Construction materials
O: small piece
M: Styrofoam
B:



C: Presswork/advertising
O: Zegels
M: Plastic
B: Jumbo



C: Packaging material
O: Large piece
M: Aluminum foil
B:



C: Presswork/advertising
O: Flyer
M: Paper
B: Maoam



C: Packaging material
O: Rubber band
M: Rubber
B:



C: Unknown category
O: Small piece
M: Paper
B:



C: Gardening
O: Rubber band plants
M: Elastic
B:



C: Bicycle parts
O: Chainguard piece
M: Plastic
B:



C: Bags general
O: Carrier bag
M: Plastic
B: Jumbo



C: Bicycle parts
O: Lamp
M: Plastic
B:



C: Bags general
O: Small ziplock bag
M: Plastic
B:



C: Electronic equipment
O: Printplaat
M: Metal + plastic
B:



C: bags general
O: Lunchbag
M: Plastic
B:



C: Medical
O: Pills strip
M: Aluminum + plastic (2 tags)
B:



C: Rope
O: Large piece
M: nylon
B:



C: Duct tape
O: Medium piece
M: Plastic
B:



C: Unknown category
O: Small piece
M: Plastic
B:



C: Fishing
O: Wire
M: Nylon
B:



C: Sex
O: Condom package
M: Plastic
B: Durex



C: Packaging material
O: Ribbon
M: Plastic
B:



C: Toys
O: Foam arrow
M: Plastic
B:



C: Clothing
O: Glove
M: Fabric
B:



C: Firework
O: Tee
M: Plastic
B:



C: Firework
O: Knetterbal
M: Plastic
B:



C: Packaging materials
O: Air cushions
M: Plastic
B:



C: Unknown category
O: small piece
M: Metal
B:



C: Narcotics
O: Gas charger
M: Metal
B:



C: Mc Flurry
O: Lid
M: Plastic
B: Mc Donalds



C: Presswork/advertising
O: flyer
M: Paper
B:
Extra tag: supermarket actie



C: Food unknown
O: pot
M: Glass
B:



C: Toys
O: Beachball
M: Plastic
B:

Resources for municipalities



Duo bagholder



Clean walk stroller



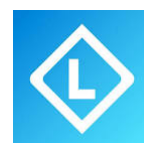
Interactive butt disposal box



*For an actual
Litter approach!*



Data litter picker



Contact & Informatie:

Stichting GoClean de Liemers
info@goclean-deliemers.nl
www.goclean-duiven.nl
Bank: NL36RABO0324935536
KvK: 70080380



word supporter

Volg ons:

